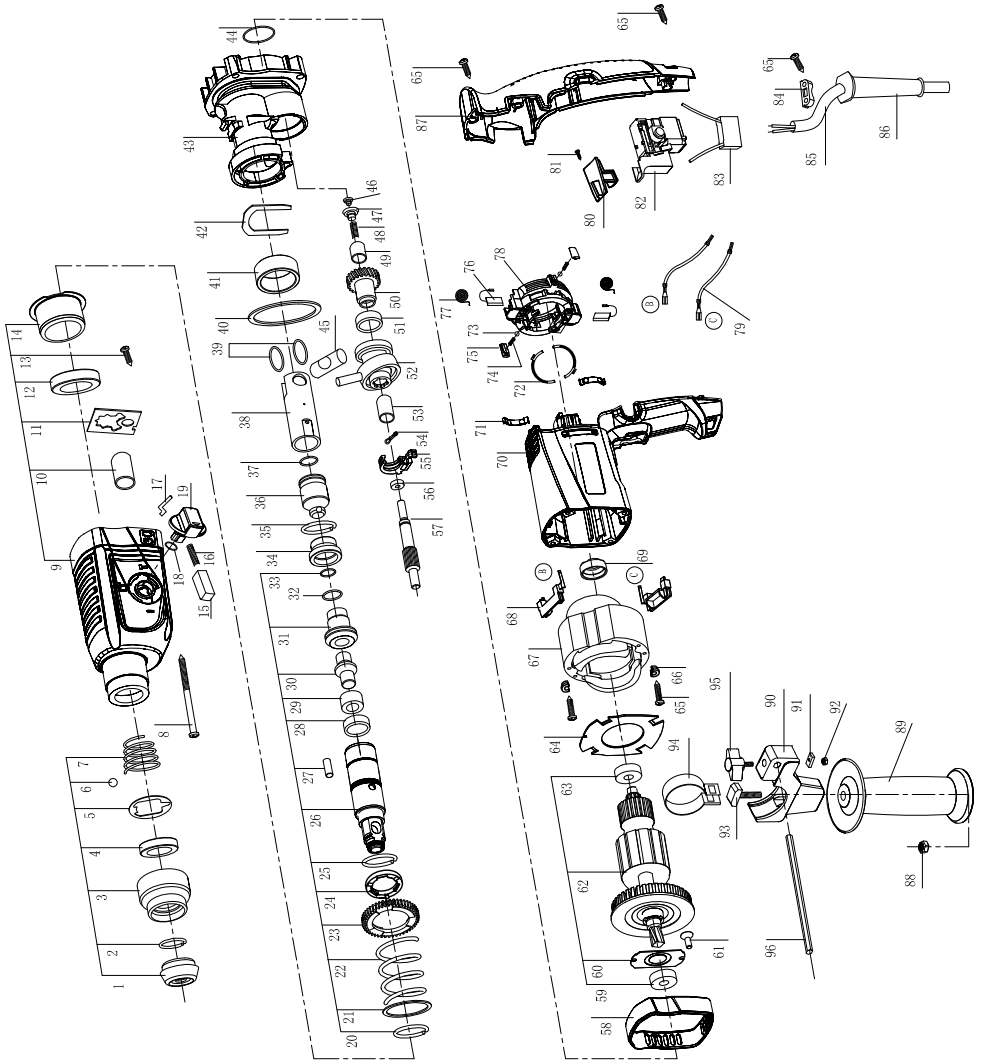


# Exploded view



## Parts List

NUMBER	DESCRIPTION	QUANTITY	NUMBER	DESCRIPTION	QUANTITY
1	PROTECTIVE CAP	1	49	NEEDLE BEARING HK0609	1
2	RETAINING RING (19×2)	1	50	CYLINDRICAL GEAR	1
3	PROTECTION SLEEVE	1	51	NEEDLE BEARING (K15×18×16.5)	1
4	THRUST RING	1	52	DRIVE END SHIELD	1
5	HOLDING PLATE	1	53	NEEDLE BUSHING HK0908	1
6	BALL (C7.14)	1	54	SPRING CLIP	1
7	SPRING	1	55	SHIFT FORK	1
8	SCREW (ST4.8×78)	4	56	BALL BEARING (699)	1
9	GEAR HOUSING	1	57	TOOTHED SHAFT	1
10	NEEDLE BUSHING HK0709	1	58	INTERMEDIATE FLANGE COVER	1
11	LOCKING PLATE	1	59	BALL BEARING (609-2RS)	1
12	OIL SEAL (24×35×7)	1	60	BEARING COVER	1
13	SCREW (ST4.2×13)	1	61	SCREW M4×7	2
14	NEEDLE-ROLLER BEARING	1	62	ARMATURE	1
15	RED BUTTON	1	63	BALL BEARING (607-2RS)	1
16	SPRING	1	64	AIR-DEFLECTOR RING	1
17	DRIVER PIN	1	65	SCREW (ST4×16)	7
18	O-RING 11×2.5	1	66	PLASTIC BLOCK	2
19	SELECTOR KNOB	1	67	STATOR	1
20	RETAINING RING (28×2.5)	1	68	CONNECTION BLOCK	2
21	WASHER	1	69	RUBBER BEARING SLEEVE	1
22	SPRING	1	70	MOTOR HOUSING	1
23	CYLINDRICAL GEAR	1	71	SLIDING PLATE	2
24	CLUTCH DISC	1	72	SHEET COPPER	2
25	RETAINING RING (29×1.5)	1	73	BALL C5	2
26	RATCHET SLEEVE	1	74	SPRING	2
27	PIN	3	75	SUPPORT	2
28	SEAL RING	1	76	CARBON BRUSH	2
29	BUSHING	1	77	BRUSH SPRING	2
30	IMPACT BOLT	1	78	BRUSH HOLDER ASSY	1
31	GUIDE BUSHING	1	79	CONNECTING CABLE	2
32	O-RING 18×3.5	1	80	AUXILIARY SWITCH	1
33	O-RING 10.8×3.6	1	81	SCREW ST3.5×8	1
34	DAMPING BUSHING	1	82	SWITCH	1
35	RETAINING RING (27.5×2)	1	83	CAPACITOR	1
36	PISTON	1	84	CORD CLAMP	1
37	O-RING 15×3	1	85	CORD	1
38	CYLINDER	1	86	CORD GUARD	1
39	SHIM RING	2	87	HOUSING COVER	1
40	O-RING	1	88	U-NUT M8	1
41	BUSHING	1	89	AUXILIARY HANDLE	1
42	HOLDING FORK	1	90	CLAMP HOLDER	1
43	INTERMEDIATE FLANGE	1	91	SUPPORT BLOC	1
44	O-RING 23.2×2.4	1	92	U-NUT M6	1
45	PISTON PIN	1	93	T-BOLT	1
46	BUSHING WASHER	1	94	CLAMPING BAND	1
47	BUSHING	1	95	WINGED SCREW	1
48	SPRING	1	96	DEPTH GAUGE	1